

Catalogue of the
ELEVENTH ANNUAL
PITTSBURGH SALON
of
PHOTOGRAPHIC ART

Gallery M. Department of Fine Arts,
CARNEGIE INSTITUTE
10 A. M. to 10 P. M. Except Sundays
2 P. M. to 6 P. M.

under the Auspices of the Photographic Section
Academy of Science and Art of Pittsburgh,
Pennsylvania, U. S. A.

MARCH 2 to 31
1924

CONTRIBUTING MEMBERS *of the Pittsburgh Salon*

WILLIAM A. ALCOCK, New York
ELIZABETH R. ALLEN, Moorestown, N. J.
CHARLES K. ARCHER, Pittsburgh
FRED R. ARCHER, Los Angeles
ALICE BOUGHTON, New York
ALFRED BRINKLER, Portland, Me.
DR. A. D. CHAFFEE, New York
RICHARD M. COIT, Brooklyn'
JAMES N. DOOLITTLE, Los Angeles
JOHN PAUL EDWARDS, San Francisco, Cal.
LOUIS FLECKENSTEIN, Long Beach, Cal.
FREDERICK F. FRITTITA, Baltimore, Md.
JOHN WALLACE GILLIES, New York
LOUIS A. GOETZ, San Francisco
FORMAN G. HANNA, Globe, Arizona
G. H. S. HARDING, Berkeley, Cal.
MRS. EMILY H. HAYDEN, Catonsville, Md.
GEORGE H. HIGH, Chicago
HENRY A. HUSSEY, Berkeley, Cal.
DR. CHARLES H. JAEGER, New York
W. C. and T. M. JARRETT, Pittsburgh
MYRES R. JONES, Brooklyn
ARTHUR F. KALES, Los Angeles
T. W. KILMER, New York
SOPHIE L. LAUFFER, Brooklyn
FRANCIS O. LIBBY, Portland, Me.
DR. RUPERT S. LOVEJOY, Portland, Me.
WM. ELBERT MACNAUGHTAN, New York
OSCAR MAURER, Los Angeles
HOLMES I. METTEE, Baltimore
ALEXANDER P. MILNE, New York
N. P. MOERDYKE, Los Angeles
ERNEST M. PRATT, Los Angeles
MRS. W. H. RAU, Philadelphia
JANE REECE, Dayton, Ohio
O. C. REITER, Pittsburgh
DR. D. J. RUZICKA, New York
THOS. O. SHECKELL, Salt Lake City
WILLIAM G. SHIELDS, New York
FORD STERLING, Los Angeles
JOHN C. STICK, Los Angeles
JOHN H. STOCKSDALE, Baltimore
H. Y. SUMMONS, England
EVERITT KILBURN TAYLOR, New York
R. W. TROWBRIDGE, Chicago
MRS. DORIS ULMANN, New York
PAUL WIERUM, Chicago
ERNEST WILLIAMS, Los Angeles
OTIS WILLIAMS, Los Angeles
N. S. WOOLDRIDGE, Pittsburgh
W. W. ZIEG, Pittsburgh

*Contributing members are those pictorialists who, by their
consistent work and contributions to our Salons,
have won a place on our rolls*

FOREWORD

THIS catalogue lists the accepted works to the Eleventh Annual Pittsburgh Salon of Pictorial Photography. The pictures hung are selected by an impartial jury whose whole aim is to present to the public examples of the best works of camera artists; pictures which show clearly a personal artistic feeling and the ability to express this feeling to the highest degree. As in the other arts, the worker must combine high aesthetic appreciation with real craftsmanship.

WE again express our appreciation of the support accorded us by the Officers and Trustees of the Carnegie Institute, who have placed these galleries at our disposal. To the jury of selection, too, upon whose shoulders rests the responsibility of deciding the acceptance of the best work offered, who have freely given their services, we extend our very grateful acknowledgment.

TO all our contributors and the Press we extend our thanks for their part in making the Pittsburgh Salon a success.

Officers

O. C. REITER, *President*, 2424 Penn Avenue

N. S. WOOLDRIDGE, *Vice-President*

P. F. SQUIER, *Secretary-Treasurer*, 237 Ave. B., Westinghouse Plan, East Pittsburgh, Pa.

S. A. MARTIN, *Print Director*

L. C. RENNIE, *Lantern Slide Director*

Executive Committee

C. E. BEESON

F. O. VAN GORDER

W. C. MELLOR

O. C. REITER

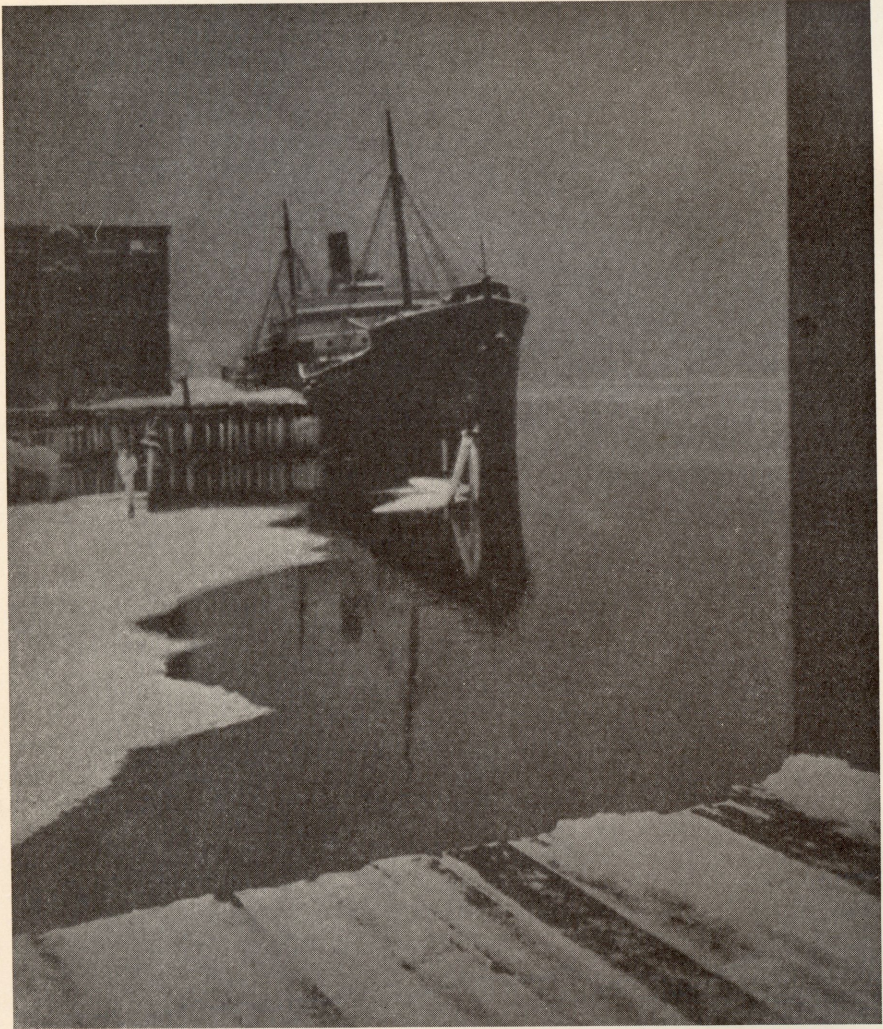
P. F. SQUIER

Jury of Selection

FRANICS ORVILLE LIBBY, Portland, Maine

HOLMES I. METTEE, Baltimore, Maryland

SAMEUL A. MARTIN, Pittsburgh, Pennsylvania



"PORTLAND HARBOR, WINTER"

by DR. RUPERT S. LOVEJOY, Portland, Maine

Catalogue

The following symbols are used to indicate the printing process used:

Artatone—A	Gum—G
Bromide—B	Kallitype—K
Bromoil—Bo	Oil—O
Chloride—C	Platinum or Palladium—P
Carbon—Ca	Satista—S
Carbro—Cb	Transfer, Oil or Bromoil—Tr

- ALCOCK, WM. A., Brooklyn.
1. Dixie B
 2. The Dancer B
- ALLEN, JOHN, Brooklawn, N. J.
3. A Misty Day, East River B
 4. Morning Sun, Wildwood B
 5. The Pound Boat B
- ALLISON, A. C. G., Chestnut Hill, Philadelphia
6. A Hazy Morning in the Catskills B
 7. The Evening Paper B
- ANDERSON, P. DOUGLAS, San Francisco
8. A Corner in China Town, S. F. C
 9. The Call of the Hills C
- ARCHER, CHARLES K., Pittsburgh
10. A Long Span Bo
 11. The Boss Bo
 12. Under the "L"—New York Bo
- ARCHER, FRED R., Hollywood, Calif.
13. The Hour of Prayer C
 14. Cassim in the Cave of the Forty Thieves C
 15. Morgiana C
 16. Aladdin C
 17. The Fisherman and the Genii C
- ARMBRUST, F. MILTON, Pomona, Calif.
18. On Board the Hiada G
 19. The Shore Line G
- ARMER, MRS. LAURA ADAMS, Berkeley, Calif.
20. Irving Pichel as Lord Kurano B
 21. Cliff Palace Mesa Verde B
 22. Chinese Actor B
 23. Zuni Potter B

BAIRSTOW, HERBERT, Halifax, N. S.	
23-a A Sunlit Corner	Tr
BAKER, F. C., Cleveland, Ohio	
24. An Old Barn	B
BAKER, VIROQUE, Hollywood, Calif.	
25. Paul Child	G
BANG, N. C., Copenhagen, Denmark	
25-a Morning	Br
BARROWS, ROBERT A., Philadelphia	
26. Sous le Cap	B
27. The Awakening City	B
28. We Three	B
29. Ripples	B
BATTEY, C. M., Tuskegee Institute, Ala.	
30. "Nourhalma"—Egyptian Water Girl	
BEACH, HOWARD D., Buffalo.	
31. Hymn of Evening	Mutotone
32. The Moon's Path	Mutotone
33. The Lake	Mutotone
34. Dawn	Mutotone
BLICKENS DERFER, CLARK, Denver	
35. The Union Station	C
36. Winter Above Timber Line	B
37. Industry	C
38. Winter Shadows	C
BLOCH, A., Copenhagen, Denmark	
38-a Night	Bo
BOUGHTON, MISS ALICE, New York	
39. Eleonora Duse	
BREMONT, MORTIMER N., Portland, Me.	
40. Wind-swept	
BRIGMAN, ANNE, Oakland, Calif.	
41. Pan	C
42. Elegie	C
43. Minor	C
BRINKLER, ALFRED, Portland, Me.	
44. In Milady's Garden	G
45. Pathway to the Peaks	G
46. Clouds that Gather 'Round the Sun	G
47. Trapper's Tracks	G
48. Birches by the Lake—Early Morning	G
BRITTINGHAM, A. D., Bridgeport, Conn.	
49. The Flirt	Bo
50. Tantalizing Pierrette	O

BROWN, CHARLES H., Santa Barbara, Calif.	
51. Study of a Child's Head	C
52. Portrait of the Rev. Allan Burleson	C
53. Portrait of Miss S.	C
54. A Study of Mrs. C.	C
55. Study of Lady in Chinese Costume	C
56. Study of Miss S.	C
BROWN, MISS GERTRUDE L., Evanston, Illinois	
57. Sunset in the Berkshires	P
58. The Studio Window	P
BRUNING, WALTER P., Cleveland, Ohio	
59. Morning Mist	C
BUCKLEY, L. J., Binghamton, N. Y.	
60. Silhouette Study	
61. Old Bill Taylor	
CASPER, EDWIN F., Milwaukee	
62. Drizzly Weather	C
CHAFFEE, DR. A. D., New York	
63. Exeter	Bo
64. Ballyshannon, Antrim	Bo
65. Donegal Landscape	Bo
66. "Cometh to Chinon, The Ancient City, Yea, the First City in the World."	Bo
67. Uzerches	Bo
68. Old Stadthaus, Rothenburg O. Tauber	Bo
CHATTO, BYRON H., Pittsburgh	
69. "And the tree with all its branches Rustled in the winds of morning."	Ca
CLARKE, L. S., Haverford, Pa.	
70. Italian Villa	Ca
CLOYES, HOWARD C., Los Angeles	
71. Morning Sunlight	B
COOMARASWAMY, DR. A. K., Museum of Fine Arts, Boston.	
72. Portrait of Stella Bloch	
COWELL, FRANCIS W., Pittsburgh	
73. The Invader	Ca
DASSONVILLE, W. E., San Francisco	
74. William Keith	B
75. Study in Black and White	B
76. Portrait of a Young Lady	B
DEERING, A. J., New York	
77. In Sunny Greece	A
78. A Drizzly Morning	A
DOONER, RICHARD T., Philadelphia	
79. Portrait of Miss P.	
80. Portrait of Miss T.	



"SUR LE PORTE"

by LEONARD MISONNE, Gilly, Belgium

- DOUDNA, FRED M., Detroit
81. A Sunlit Corner
82. Reflections
83. Sunlit Water
84. Along the Dock
- DOUTT, CHARLES W., Pitman, N. J.
85. By the Sweat of his Brow B
- DUCKERT, D., Copenhagen, Denmark
85-a Twilight in the Old Street Br
- ERVIN, WM. F., Denver
86. Notch Top Mountain C
87. Winter's Beauty C
- EDWARDS, JOHN PAUL, San Francisco
88. A Monterey Morning B
89. The River Thames B
90. The Pepper Tree B
- FISHER, MISS MARY, Akron, Ohio
91. Eleanor
- FLECKENSTEIN, LOUIS, Long Beach, Calif.
92. Boy Scout C
93. Frank Cuprien, Artist CC
94. Miss Vanda Hof C
- FRAPRIE, FRANK R., F. R. P. S., Boston
95. At the Foot of the Simplon B
- GILCHRIST, WILLIAM, St. Augustine, Fla.
96. Tapestry Bo
97. Desolate Isle Bo
- GILLIES, JOHN WALLACE, New York
98. Three Jugs B
99. Three More Jugs B
100. Sphinx B
- GILPIN, MISS LAURA, Colorado Springs
101. Brenda Putnam P
- GOTSHALL, I. W., Toledo
102. Autumn Day S
- GRANT, D. W., Franklin, Pa.
103. The Fisherman's Evening
- HANNA, FORMAN, Globe, Arizona
104. The Remuda B
105. Houses, Acoma B
106. A Desert Landmark B
107. House and Peppers, Jemez B
- HARDING, G. H. S., Berkley, Calif.
108. The Fountain B

HARTING, G. W., New York	
109. Leo Lentelli—Sculptor	C
110. A Stevedore	C
HATTEN, FRANK W., Chicago	
111. My Mother	
112. Conchita	
HAYDEN, MRS. EMILY H., Catonsville, Maryland	
113. Old Saw Mill	P
114. Olive	P
HAZEN, TODD, Portland, Oregon	
115. The Three Graces	B
HELLMUTH, CHAS. A., New York	
116. Through the Back Window	Bo
117. Light Effect (Pennsylvania R. R. Station—N. Y.)	B
HENRY, EUGENE P., Brooklyn	
118. The Make-Up	Bo
119. Decorative Panel	K
HIGH, GEORGE HENRY, Chicago	
120. Shopping in Old Rome	
121. The Water Carrier	
HOOPS, MRS. MILLIE, Los Angeles	
122. Fisherman	B
123. Miss Watkins	B
124. Flint Ridge	B
125. A Homely Task	P
HUGHES, WILLIAM D., Chicago.	
126. The Rose	
127. Occidental Worship	
128. Modesty	
HUSSEY, HENRY A., San Francisco	
129. Sunlit Columns	B
INGALLS, FRANK M., Richmond Hill, N. Y.	
130. Verrazzano Statue, Battery Park, N. Y.	B
JOHNSTON, RALPH W., Pittsburgh	
131. Prince Charming	
132. Our Lady Hopeful	
JONES, MYERS R., Brooklyn, N. Y.	
133. Clovelley's (England) Backstairs	Bo
KELLMER, J. WILL, Pittsburgh	
134. The 'Kerchief	PN

KIEM, JOHN H., East Orange, N. J.	
135. The Intruding Sunlight	Bo
136. In Winter's Grip	Bo
137. Ebb Tide	Bo
138. On the East Side	Bo
KILMER, T. W., New York	
139. Nuremburg	C
140. Marine	C
141. Evelyn	G
KIRA, HIROMU, Seattle	
142. The Shade and Shadows	
KLEIN, MISS EDITH H., Detroit	
143. Just a Song at Twilight	P
144. A Portrait	P
LAUFFER, MISS SOPHIE L., Brooklyn	
145. Aughmuthies Oldest	B
146. Sentinels of the Air	B
LEDERLE, CHAS., Cleveland	
147. August	Bo
148. Tragedy of the Forest	Bo
149. The Toilers	Bo
150. Gateway to the New World	Bo
LEIGHTON, J. HAROLD, Bradford, England	
151. Legovia	G
152. Boston	G
153. Clayton Mill (Rain)	G
154. Wind Swept	G
LIBBY, FRANCIS O., F. R. P. S., Portland, Me.	
155. Snow Dunes	G
156. The Beach Riders	G
157. The Chateau	G
158. Backyards	G
159. Noctune—The Bridge	G
160. The Curving Way	G
LOVEJOY, DR. RUPERT S., Portland, Me.	
161. Portland Harbor—Winter	
162. In Northern Waters	G
163. Peaks and Ravines	G
164. The Models	G
165. Rock Climbing—White Mts.	G
166. The Collier	G
LUBSCHEZ, BEN. J., New York	
167. High Bridge at Night—New York	B
168. Glimpse of 56th Convention, A. I. A., Washington	B
MAC ASKILL, W. R., Halifax	
169. Morning along the Waterfront	B



"MME. LA MERCER"

by MISS JANE REECE, Dayton, Ohio

MATHEWSON, MRS. LUCY AND RAY, Asheville, N. C.		
170.	First Frost of Autumn	C
171.	Steam and Smoke	C
172.	Seven P.M.	C
173.	Light, the Source of Life	C
MATSON, VICTOR S., Los Angeles		
174.	Playground of the Giants	B
MAUPIN, CLIFTON TARRENCE, Pomona, Calif.		
175.	Street Scene—Early Morning	B
METTEE, HOLMES I., Baltimore		
176.	The Steel Mill	B
177.	Pittsburgh	B
178.	Highlights and Shadows	B
179.	Martha G.	B
MILNE, A. P., New York		
180.	Study of a Head	C
181.	Study of a Head	C
182.	Illustration	C
MISONNE, LEONARD, Gilly, Belgium		
183.	La petite bergere	Bo
184.	Joyeux Conte	Bo
185.	Le Chemin Lumide	Bo
186.	Mon jardin	Bo
187.	Sur la porte	Bo
188.	La guirlande	Bo
MOERDYKE, N. P., Los Angeles		
189.	Reflections	G
190.	Lower Away	G
191.	Stream Side	G
192.	The Shaded Road	G
MOLLER, JULIUS, Copenhagen, Denmark		
192-a	Entrance to the Park	Tr
MURAY, NICHOLAS, New York		
193.	Nude Study	C
194.	Study of the Dance	C
195.	The Dance	C
McINTOSH, FRANKLIN GRAY, Franklin, Pa.		
196.	Street Scene in Matanzas	
197.	Street Corner in Havana	
McLEAN, MISS ARMELEA H., Bronxville, N. Y.		
198.	On the Dunes	P
199.	Portrait of a Girl	P
McPHAIL, E. I., Buffalo		
200.	The Builder	Ca
NAGORSKI, FRANCIS T., Erie, Pa.		
201.	San Juan Harbor	B

- NAKAYAMA, LAQUAN I., New York
202. Japanese Fantasy B
- NEWTON, JOHN W., Columbus, Ohio
203. Evening—The Adirondacks B
204. The Right of Way B
- NILSEN, DR. ARTHUR, New York
205. The Acrobat B
206. Three Elephants B
- PARTINGTON, CHAS. H., Cincinnati
207. Repair Docks—Gloucester
208. The Finished Stack
- PETROCELLI, JOSEPH, New York
209. The House Number 10 Bo
210. Across the Canal—Venice Bo
211. Showery Day in Nuremberg Bo
212. Faith Bo
- PRATT, ERNEST M., Los Angeles
213. Landscape (Springtime) Bo
214. Negro Bo
215. The Old Home Bo
216. Witches by the Sea B
- RABINOVITCH, New York
217. Danse Plastique—A Nude B
- REECE, MISS JANE, Dayton, Ohio
218. Mlle. Sabine Desvallieres
219. Elenor
220. Spaces
221. Jess Aull
222. Mme. La Mercer
- REIS, G. NORMAN, Wilkinsburg, Pa.
223. The Sun Fan B
- REITER, O. C., Pittsburgh, Pa.
224. A Decorative Panel "The Spirit of Pittsburgh" C
225. The Boom B
- RORHER, CYRIL, B., Victoria, B. C.
226. The Little White Sister C
- RUTHERFORD, MRS. ISABEL, Liverpool, England
227. Motherless
- RYAN, JOHN JULIUS, Chicago
228. Verve
229. Provocation

- SANCHEZ, CARL N., JR., New York
 230. Design Japanesque B
 231. Evening Spector B
- SCHAAF, ALBERT E., Cleveland
 232. The Old Ship Bo
 233. Landscape Bo
- SCHONEWOLF, H. W., Buffalo
 234. The Road Builders Ca
- SEEHAUSEN, GILBERT B., Chicago
 235. Con Spirito B
 236. Serpentine B
 237. Largo B
- SEMON, CARLE, Cleveland
 238. The Power House B
- SHECKELL, THOS. O. Salt Lake City
 239. October B
 240. Snow B
 241. The Gorge B
- SHIELDS, WILLIAM GORDON, New York
 242. Doorway of Mission San Gabriel G
 243. An Interior G
- SQUIER, P. F., Pittsburgh
 244. Finding Treasures on the Old Bridge PN
 245. The Lone Tree B
- STRUSS, KARL, Hollywood, Calif.
 246. Hilltops P
- SUMMONS, H. Y., Virginia Water, England
 247. Trafalgar Sq., London PN
- SYMES, C. J., Birkenhead, England
 248. Moorland and Storm T
 249. Marche' aux Herbes—Morning T
- THOMAS, CHAS. H., East Cleveland
 250. The Old Gateman B
- TROWBRIDGE, R. W., Chicago
 251. Pyre of Flames B
 252. Silvered Mists of Dawn C
 253. Bruto Cane! C

TYROVOLAS, P. ADAMS, Detroit	
254. Twilight	B
VANDERPANT, J., New Westminster, B. C.	
255. Easy Street	B
256. The Playground of the Swans	B
WEDDELL, RALPH, R., Chicago	
257. A Rock Bound Beach	B
WIGHTMAN, DR. E. P., Rochester, N. Y.	
258. Dusk	B
WIGLE, A. P., Detroit	
259. Portrait of E. P. Z.	C
260. Trees and Snow	C
261. Portrait of Donald A.	C
WILLIAMS, ERNEST, Los Angeles	
262. Lombardy Poplars	C
263. Landscape	Ca
WILLIAMS, OTIS, Los Angeles	
264. Cymbal Dancer	C
265. Old Ocean's Ode	C
266. Pierrot Diabolique	C
267. Autumn Argosies	C
WOOLDRIDGE, N. S., Pittsburgh	
268. February, New York	Ca
YOUNG, RALPH, San Francisco	
269. Head Study of Indian Woman	C
270. The Stork	B
271. Scarlet Woman	C
ZERBE, WILLIAM H., Richmond Hill, L. I. N. Y.	
272. A Three Alarm	Bo
273. The Iron Gluton	Bo
ZIEG, W. W., Pittsburgh	
274. The Screened City	Bo
275. Modern Pueblos	Bo
276. A Niche in the Grand Central Galleries	Bo

We ask our contributors to name a sale price for their prints, if any. Inquire at desk if interested.



For Personal Motion Pictures

*Illustrating Ciné-Kodak with
Kodak Motor Drive—as you
press the button the motor cranks
the camera.*

THE new Eastman motion picture outfit gives you “movies” just as easily as your hand camera now gives you “stills.” Make pictures with the Ciné-Kodak, project them in your own home with the Kodoscope, and story-telling incidents of the household happen all over again.

Nor are you confined to pictures that you make yourself. Charlie Chaplin comedies and dramas featuring such artists as Constance Talmadge, Alice Brady and Thomas Meighan may be rented through Kodoscope Libraries, Inc., and shown on your own screen.

The operating expense of the Ciné-Kodak is less than 20 per cent of that of an outfit using standard width film.

The development and reversal of Ciné-Kodak film are done at the

Eastman laboratories and the charge is included in the price of the film. When you have bought your film your finishing is paid for. *You press the button; we do the rest.*

Price of complete outfit, including Ciné-Kodak with either motor drive or crank, Kodoscope, Screen, etc., \$335. Descriptive booklet at your dealer's or from us.

Eastman Kodak Company, Rochester, N. Y., *The Kodak City*



A Reliable Product

ASKING the man who uses it is a good test of any product, but a better one is to ask the man who is using it after using everything else.

The Cyko business which keeps rolling up is from photographers who have been using other papers.

They were not sure that Cyko was better, but were willing to try it and now they buy it because they know it is a more satisfactory product—one that they can depend on to obtain superior results.

The point we would make is that Cyko is the best the market affords, and reliable—as good tomorrow as today.

Buff and Plat in double weight, Studio and glossy in single weight and double.

Enlarging Cyko in double its former speed is also available in the same surfaces and weights as Professional, and in addition to the regular or portrait grade there is a Contrast grade for amateur negatives which may be thin or weak. Enlarging Cyko makes enlargements of professional quality, tone and finish, and is the easiest enlarging paper with which to obtain a satisfactory projection.

AnSCO Photoproducts, Inc.

Binghamton, N. Y.



The Kalosat

The LENS for The MAN Who Cares

THIS LENS is recognized as one of the fastest of the day. It is constructed of a single element of quartz transparent to all the valuable light rays including the ultra-violet which gives full color values with soft diffuse effects.

Write for booklet "K" It tells how the Kalosat will improve Photography.

HANOVIA LENS LABORATORIES

NEWARK, N. J.

GRAF

Super Lenses

THE Graf Variable is the only lens manufactured which will give either diffused or sharp pictures, without diaphragm control. Sharp or soft wide open, or stopped down.

The Super Anastigmats Lenses of perfect correction, excelled by none.

The Graf Variable

When first you try out this lens you may suffer a certain annoyance, just as you would with any other thing new. If you go further, and not let the newness of the lens bother you, you will soon find that it is an instrument which will do things that no other lens will do.

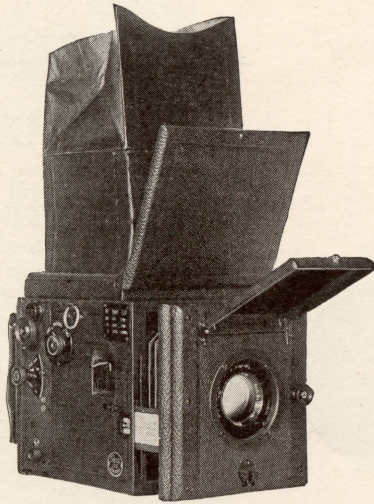
The mere fact that you are annoyed is a great compliment to the lens, since it tells that you are experiencing a new venture into photography. You are going further than you ever did before. You are making a distinct progress, which is the aim of every thinking man. A little patience is the solution of this matter. When you try any new instrument or machine, you are likely to feel strange about it.

But go ahead with the Variable, and you will experience the same happiness as many others, among them—Hutchinson, Weston, Genthe, Gillies, Sloane, Trowbridge, Muray, Brugiere, Reiter, Ellis, etc. ad infinitum.

The GRAF Optical Company

SOUTH BEND, INDIANA

NEW YORK OFFICE—80 WEST 40th STREET



Ica Reflex

3¼ x 4¼

BIG VALUE in this compact, light-weight camera—the *Deluxe Reflex* with the features you're looking for: easy to carry—rapid in operation—quick, certain focusing—fine, durable construction throughout, and a lens that has no equal **\$112.00**

Carl Zeiss f4.5 Tessar Lens

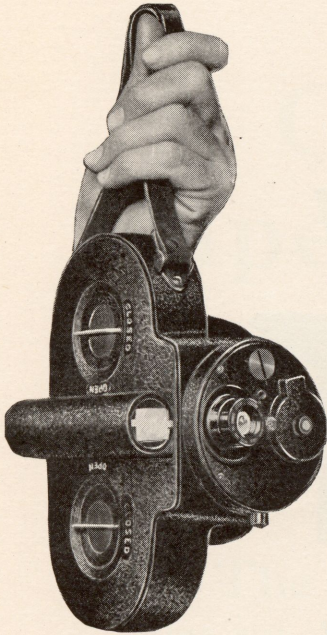
High Speed Focal Plane Shutter; cable release included for time exposure; reversible back; rising and falling front; self-erecting hood; long bellows (extension, 9½ in.) Size of picture, 3¼x4¼ in. (not centimeters.) Focal length of lens, 6 in. Price includes 3 metal plateholders.

Mail Orders receive immediate attention

ABE COHEN'S EXCHANGE

113 PARK ROW, NEW YORK

The B. & H. Automatic Cine Camera



**The B. & H. Automatic
Cine Camera**

*Mechanism is driven by the highest type
of spring motor*

NEEDS no tripod and no action is too quick to be followed. What you see you get, just by the touch of a button. Spring motor. Equipped with highest grade F-3.5 anastigmat lens. Loads in daylight. Capacity 100 ft. 16 m/m Eastman Kodak Cine film, equivalent to 250 ft. of standard or 4000 separate pictures. Films purchasable at any supply house for \$6.00, including developing ready for projection in the 9 to 1 movement Bell & Howell Cine-Projector.

The B. & H. Cine Camera as well as the Cine Projector compare favorably in quality of design, construction, and performance, with the \$5000.00 Bell & Howell Standard Professional Motion Picture Camera, which is used exclusively by the leading motion picture producers throughout the world.

Portable Cine Projector

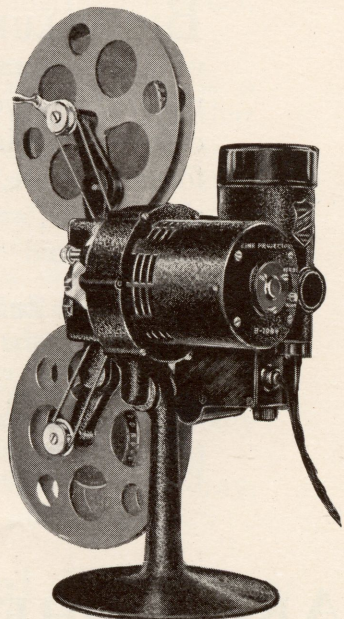
PRODUCE absolutely flickerless projection of unusual brilliancy by reason of its 9 to 1 shuttle movement in combination with a high frequency shutter and an unexcelled optical system. Weighs only 9 lbs. Folds into a case 8"x11"x11". Capacity equivalent of 1000' standard film. Ideal for every use—home, educational, industrial etc.

Libraries affording the rental of hundreds of 16 m/m reduced prints made from standard size negatives already established, thus enhancing the utility of the Cine Projector.

Bell & Howell Co.

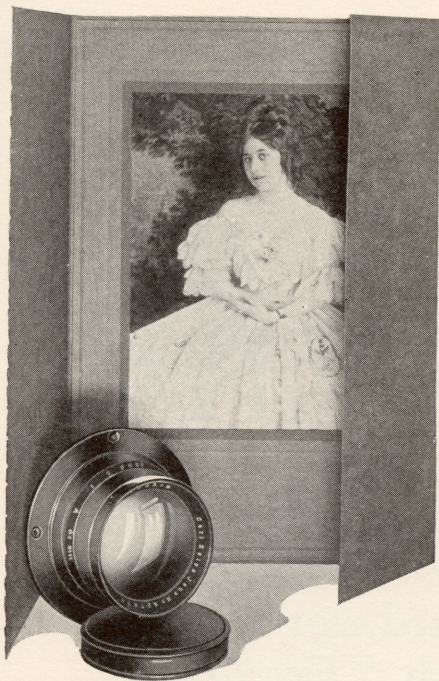
1803 Larchmont Ave.

New York CHICAGO Hollywood



**The B. & H.
Portable Cine Projector**

Ready for Work or Pleasure



CARL ZEISS

*Photographic
Lenses*

HAROLD M. BENNETT
(U. S. AGENT)

153 West 23rd Street, New York

“*Call It GAY-VERT*”

The Name
“GEVAERT”

on a package of *Photographic Papers* or *Plates* is throughout the civilized world synonymous with “*Excellence of Quality*”

Special Introductory Offer

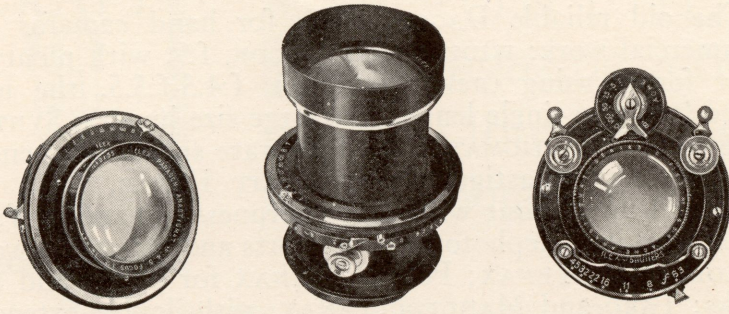
Send us *One Dollar* and we will send you our *Generous Assortment* of *Gevaert Perfect Photographic Papers* to get you acquainted with our line, including *Ronix, Novagas, Vittex, Orthobrom, Novabrom.*

Only one offer to a customer

The Gevaert Company of America, Inc.

423 to 439 West 55th Street, NEW YORK

CHICAGO BRANCH: Geo. W. Mackness & Co., Inc., 180 North Wabash Avenue



Inspiration

Just the Pose--Just the Setting--

**Every Detail Perfect for a
Masterpiece of Photo-
graphy.**

What a disappointment if your
equipment should fail.

Guard against such a calamity.

*An Ilex cannot fail. Ilex Lenses sci-
entifically designed and perfected
to meet every photographic need.*

*Ilex Shutters furnish just the
mechanical co-operation which
these lenses require.*

Your photographic dealer is your
Ilex Stock House.

We will supply you thru him.

ILEX OPTICAL COMPANY

ROCHESTER, N. Y.

GOERZ

The old reliable DAGOR, f:6.8, for hand cameras and commercial work; WIDE ANGLE DAGOR, f:9, with plenty of light for focusing (new); DOGMAR, f:4.5-f:5.5, the ideal speed lens, the single lenses give large size images; SYNTOR, f:6.8 AND TENASTIGMAT, f:6.3, moderate speed, inexpensive hand camera anastigmats; PORTRAIT HYPAR, f:4.5, the portrait lens without wire edge sharpness; TELEGOR, f:6.3, a fast working telephoto lens for sports and naturalist work.

ROLL FILM TENAX; POCKET TENAX for plates and film packs; TARO and MANUFOC TENAX, with double extension for plates and film packs; ANGO FOCAL PLANE CAMERAS; MOTION PICTURE CAMERAS.

Other Products are Motion Picture Lenses, Photo Engraving Lenses, Binoculars, Polariscopes, Barometers, and various Scientific Instruments.

Information and Printed Matter on Request

C. P. Goerz American Optical Company

321A E. 34th Street, New York, N. Y.



*Awarded Gold Medal by the Photographers Association
of the Middle Atlantic States, 1919*

O. C. HENRY'S STUDIO

Portraits by Photography

339 FIFTH AVENUE

Pittsburgh, Pa.

Telephone Grant 3581



MONTHLY
magazine cover-
ing all that is best
in Photography. - -

Pictorialists are especially interested in our Arts and The Crafts department as it encourages a closer relationship between photography and the fine arts. - - -

\$1.50 a year, Sample Copy on request

Camera Craft Publishing Company

CLAUS SPRECKELS BUILDING

SAN FRANCISCO, CALIFORNIA

Women Are Finding This A Good Bank to Know

IT IS our constant endeavor to anticipate their every need as relates to banking service, and to meet it with painstaking attention to detail.

Whether it be a Savings Account, or a household Checking Account, the women of our community may come to this institution in the certain knowledge that their business will be *absolutely confidential* and that the full benefit of our business experience is theirs for the asking.

Peoples Savings & Trust Co.

of Pittsburgh

"Where Wood Crosses Fourth"

Trinity Court Studio



*Where all that is
Best in Photography
is Produced*

TRINITY Court is an organization of specially trained Artists, carefully chosen for their own particular line—and are ready at all times to serve in Our Studio or Your Home.

All work is under the personal supervision of Ralph W. Johnston, and all portraits bear his signature. This is our guarantee to the public.

Studio at
313 Sixth Avenue
Pittsburgh, Pa.

GRANT 5269--5270

WILLOUGHBY'S INC.

CAMERA HEADQUARTERS

110 West 32d Street, New York

118 West 44th Street, New York

is a *Photographic Institution* where everything photographic is obtainable at a moments notice without waste of time and effort—served by men with an intelligent understanding of photographic needs and 25 years of experience.

Everything Photographic
GEORGE MURPHY, Inc.

125 East 9th Street, New York City

Carbon and Carbro Supplies

Bromoil Materials

New Imported Self-Toning Papers in Colors

Imported D. O. P. and Bromide Paper

Wynne's Infallible Exposure Meter

New Mammoth Photo Supply Catalogue

Send for FREE COPY of our Monthly Magazine—*Snap Shots*

THE soft, artistic effects now so much in demand are easily procured with the BAUSCH & LOMB PLASTIGMAT. This lens possesses many exclusive features which have made it a favorite among discriminating photographers. Write for circular describing the

**Bausch & Lomb
PLASTIGMAT**



Bausch & Lomb Optical Co.

635 St. Paul St., Rochester, N. Y.

New York Washington Chicago San Francisco London

Mrs. Florence Fisher Parry

takes pleasure in announcing that

THE PARRY STUDIO

has acquired the Photographic Talent of

Mr. J. Will Kellmer

in the making of

GRAVURE PORTRAITS

THE PARRY STUDIO 212 OLIVER AVE. PITTSBURGH, PA.
Phone Smithfield 0342

Your Success in Photography

EVERY reader of this catalogue is seriously interested in photography. Of this we feel assured—otherwise he would not have had any interest in this exhibition. What does he need to supplement this interest? Information! That is the secret of good results backed by experience. Information must be up-to-date, authentic, and to be valuable the useless facts must be weeded out from the practical “meaty” matter, and the net result presented to the reader. This is what the Editors are doing in our monthly magazine **AMERICAN PHOTOGRAPHY**. For more than thirty years this magazine has served the American photographic public, and endeavored to be all that its name implies—the standard American photographic magazine. It covers the whole field of photography, for amateur, professional and commercial workers, publishing each month forceful articles on the best current practice and latest advances in each of these classifications. The monthly departments include two monthly competitions, with criticism of pictures; “The Question Box,” “The Market Place,” listing the most recent information as to firms buying pictures, “The Photographic Review” of all new ideas in the world’s literature; “Nature and Wild Life;” “Readers’ Criticisms;” “Our Illustrations,” criticizing the pictures published; “Questions and Answers;” “Forthcoming Exhibitions;” “Notes and News” of clubs, new material, books and manufacturing activities. In short, we publish a readers’ magazine, and in addition place our Editorial Staff at the service of our friends, to help them with perplexing problems. This means you!

Does a magazine published along such lines meet your ideas of good service. We think it does, for we try to put ourselves in our readers’ positions when we consider a change in the makeup of the magazine. Join our steadily increasing circle of readers and friends. The subscription price is but \$2.50 per year, including personal editorial help when you need it. Send your subscription today and look forward to twelve numbers of the best photographic literature that you have ever read.

American Photographic Publishing Co.

428 Newbury Street

Boston 17, Mass.

PHOTO-ERA MAGAZINE

The American Journal of Photography

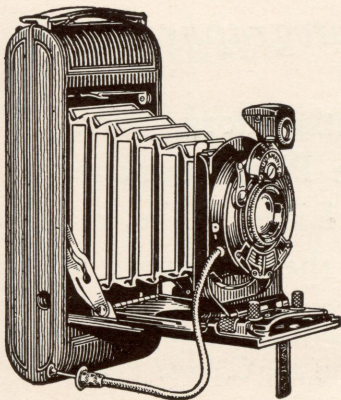
“THE PHOTOGRAPHIC JOURNAL THAT IS DIFFERENT”

Photo-Era Magazine is trying to fill its own niche in the photographic world. No matter how many photographic magazines you may read, you will always find something different in **Photo-Era Magazine**. Editorially and typographically it is a quality publication. Its helpful and inspirational articles combined with the pictorial qualities called for by its two monthly prize competitions serve to stimulate a high artistic standard in photography. Ask us for a sample copy, or better yet send \$2.50 for a year's subscription in the United States. Canadian subscription \$2.85, foreign \$3.25.

PHOTO-ERA MAGAZINE

Wolfeboro, New Hampshire

Kodaks & Graflex



DEVELOPING
PRINTING
ENLARGING
LANTERN SLIDES
PICTURE FRAMING
KODAKS
GRAFLEX CAMERAS
PREMOS
CARRYING CASES
TRIPODS
KODAK FILMS
FOUNTAIN PENS
EVERSHARPS

Photographic Supplies and Apparatus

Alexander Brothers Co.

124 Sixth Street *Opposite Alvin Theatre* Phone Smithfield 1880



IF YOU desire a delightful atmospheric quality of softness in your prints, if you are striving for the finest effects in your pictorial work, you will be interested in a treatise entitled

THE VERITO

By Sigismund Blumann

Mr. Blumann is an eminent pictorialist, and he writes from the user's view-point. The article referred to appeared originally in Camera Craft. If you want a copy just ask for "The Verito Leaflet."

Wollensak Optical Company

Makers of distinctive lenses that make distinctive pictures

Rochester

N. Y.

WALTER C. JARRETT & SON



Photographers

The satisfactory place to have Pictures made of the Little Folks, as well as the Grown Ups

*The Latest Up-to-Date
Methods at our Ground Floor
Studio*

226 SHADY AVENUE, PITTSBURGH, PA.

Phone Montrose 0723

LUMIÈRE

AUTOCHROMES

*Photographs in Full Color
without Special Apparatus*

THE marvelous reproductions of nature made by the Lumiere Autochromes require no greater skill to produce than ordinary photographs.

Thousands of amateurs and professionals are broadening their field of pleasure and profit by this glorious invention.

Any plate-camera can be used; no special equipment for making or developing except a yellow filter.

Send for booklet.
Stocked in all standard sizes.

R. J. Fitzsimons Corp.
Dept. C, 75 Fifth Avenue, New York

ILFORD

Specialized Plates

*Give Results Beyond Comparison for
Difficult Work*

ILFORD ZENITH & Iso-ZENITH (Speed 650 & 700 H. & D.) Super-sensitive plates which are invaluable for portraiture and press work, producing beautiful gradations and excellent negatives with the shortest possible exposure.

ILFORD SCREENED CHROMATIC are color-sensitive (except to red) and especially to green and yellow. They give true color-values, yet dispense entirely with screens or light-filters. Ideal for architectural and landscape-work. (Speed H & D 270.)

ILFORD SPECIAL RAPID PANCHROMATIC are by far the fastest *Panchromatic plates made* and are sensitive to all colors.

These are only a few of the 17 different plates for every photographic need manufactured by Ilford besides a full line of films, filters, papers, and etc.

Send for descriptive booklets.

R. J. Fitzsimons Corp.
Dept. C, 75 Fifth Avenue, New York

**Our Specialty
Framing Pictures to Order**

**Pictures
Frames
Mirrors**



Geisler Brothers
ART DEALERS

5935 Penn Ave. Pittsburgh, Pa.
Phone Hiland 1514

**Hess
Photographing
Service**

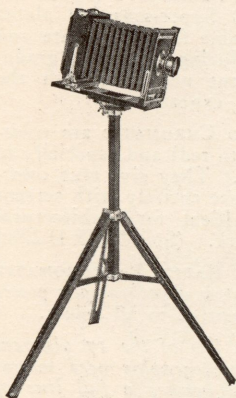
**Photographer
of Fine Arts
and
High Grade Commercial Work**

212 Oliver Avenue
PITTSBURGH, PA.
Phone Smithfield 0537



Inquire about the Hess Method of Photographing Letters and Important Documents direct on paper.

The Korona Home Portrait Camera with a Korona Folding Studio Stand



Is the most practical, convenient and handsome outfit for photography in the home and small studios.

Equipped with a Series IV Gundlach Anastigmat F.6.3. or Radar Anastigmat F.4.5 this outfit is beyond comparison the ideal equipment for the specialist in this line of work. *Send for folders.*

Gundlach-Manhattan Optical Co.

Clinton Avenue, S., Rochester, N. Y.



JOHN C. BRAGDON
DESIGNER
WOOD HALFTONE & ZINC
ENGRAVER

~ Commercial Photography ~
Labor Saving Enlargements and
Reductions for Engineers
Color Work Our Specialty

711 PENN AVENUE, PITTSBURGH, PA.
BELL PHONE GRANT 2943

About

Strickler's Photographs

There is,

Something different,
Something pleasingly
natural,
Something *human*.

Winner of "Daguerre Memorial
Diamond Medal of Honor" (Premier
Trophy of Portrait Photography, won
in World competition.)

*Also 11 other National, International and
Sectional Trophies and Awards.*



Studio 6016 Penn Ave.
Sittings by Appointment

Telephone
Montrose 3436

Fine Art Galleries

Paintings by Foreign and Amer-
ican Artists.

Etchings, Mezzotints, Engrav-
ings

Best Reproductions of Cele-
brated Paintings

Gilders and Expert Painting
Restorers

Artistic Framing

Visitors Cordially Invited to
Our Galleries

ESTABLISHED 1832

J. J. Gillespie & Co.

422 Wood Street

Amateur Motion Picture and Kodak Supply Headquarters

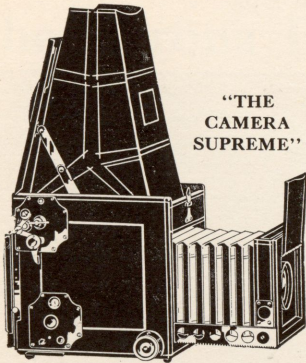
We carry a complete
line of cameras, Gra-
flex, Cine Kodak Out-
fits, Sept, and Ica Kin-
amo Motion Picture
Cameras



B. K. Elliott Co.

126 Sixth Street Pittsburgh, Pa.

Opposite Alvin Theatre



"THE
CAMERA
SUPREME"

Kodaks & Graflex Cameras

All Models always in stock
High Grade Cameras and Lenses
Bought and Exchanged

SAM ZIONTS
PITTSBURGH CAMERA CO.
416 Wood St., Pittsburgh, Pa.
Court 4394

Potter Paragraphs · 45

Sure of prompt income and unchanging in value

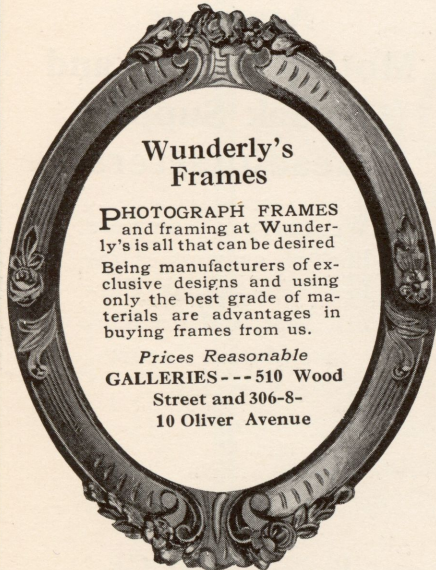
GUARANTEED Mortgage investments are always worth what you paid for them—their value never changes. The income is paid the day it is due. Both of these desirable qualities can be obtained by an investment in doubly secured Mortgage Certificates yielding 5% free of the state tax. May be purchased at any time \$100 and up.

POTTER TITLE & TRUST CO.
Member Federal Reserve System
Fourth Avenue & Grant Street, Pgh.

Please mail your booklet

To _____

At _____



Wunderly's Frames

PHOTOGRAPH FRAMES
and framing at Wunderly's is all that can be desired. Being manufacturers of exclusive designs and using only the best grade of materials are advantages in buying frames from us.

Prices Reasonable
**GALLERIES --- 510 Wood
Street and 306-8-
10 Oliver Avenue**

Root's Kamera Exchange

11—5th Avenue Arcade

The one place where you
can get what you want

Amateur and Professional Photographic Supplies

*New and Used
Cameras*

GEO. G. ROOT, Proprietor



"Be Photographed this Year on Your Birthday"

Jamieson Sisters

GROUND FLOOR STUDIO
242 South Highland Avenue
E. E. PITTSBURGH

Photographs for everybody—each member of the family—with particular attention to the little folk. The one gift that your friends and relatives cannot buy. *Telephone Montrose 1994*

J. R. WELDIN COMPANY

Booksellers, Stationers & Engravers

Engraving and Stamping for all Social and Business purposes correctly done. Ideas and Suggestions for your particular requirements submitted upon request.

Waterman Fountain Pens & Pencils

413-415 Wood Street
Pittsburgh, Pa.

THE STRUSS PICTORIAL LENS

REDUCTION in price, all sizes. Simplicity of construction with low overhead puts the Struss Pictorial Lens in your hands at about half the price of others of equal speed and focal length. And this pioneer soft focus lens has given distinction to the work of amateurs and professionals all over the world for years. Booklet explains exclusive features.

Frederick W. Keasbey

Box 303, Morristown, N. J.



What's In A Name?

WE offer buyers of *Half Tone* and *Color Printing* the complete facilities of an efficient organization equipped to meet your most exacting requirements

Sterling Press

Creators and Printers of Sales Producing Publicity

1023 LIBERTY AVENUE PITTSBURGH PA

The Academy of Science and Art of Pittsburgh

cordially invites you to its membership. A member's ticket admits at least two persons to each Academy or Section lecture or meeting. To most of the events of the Academy and to all those of the Sections a membership admits as many persons as you may wish to bring.

There are eleven Sections of the Academy, viz: Pedagogical, Photographic, Eugenics, Biology-Geology, Esperanto, Hygienics, French, Dramatic, Art, Economics-Sociology, Music. A member of the Academy may join any of these without additional charge.

APPLICATION for MEMBERSHIP

ANNUAL DUES, \$5.00

LIFE MEMBERSHIP, \$100.00

Mr. S. Philson,

Pittsburgh, Pa.,

Secretary, Academy of Science and Art, 5818 Alder St., Pittsburgh.

Dear Sir:—Please present my name for $\left. \begin{array}{l} \text{annual} \\ \text{life} \end{array} \right\}$ membership in the Academy.

I enclose check for \$..... to the order of ALEX. DUNBAR, Treasurer. I desire also to be an active member of the

..... Section

(Insert Section or Sections desired)

Name

Address

(To which notices should be sent)

Recommended by

and

Approved by Academy Council

This Space Contributed by
The BANK of PITTSBURGH, N. A.

The Oldest Store in Pittsburgh

for

Photographic Equipment and Supplies

Everything you want when you want it.
All kinds of enlarging paper, Wellington
Bromide Paper, contact printing papers,
Carbon Tissue, Transfer Papers, Bromoil
Materials in stock. Everything the art
demands in the best grade and at lowest
prices.

Lantern slide materials of every kind.
Kalosat, Spencer, Verito, Graf and Plas-
tigmat Lenses.

Complete line of Graflex Cameras and
Special Kodaks.

Developing, Printing and enlarging.

Information and assistance cheerfully
given.

Bell Phone Court 0606-0607

W. S. BELL & CO.

410 WOOD STREET

Pittsburgh, Pa.

